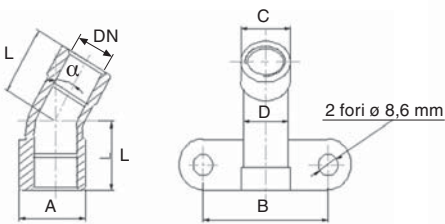


90 Gomito 90° FF

Elbow 90° F/F
 Winkel 90° I/I
 Coude FF 90°
 Codo 90 HH

Materiale: AISI 316 / W. 1.4401
 Filettatura: ISO 7/1 (ex DIN 2999)
 Rating: 150 PSI – PN10

Codice	DN	DN inch	A mm	L1 mm	Peso gr
090108316	6	1/8"	17	19	39
090104316	8	1/4"	21,3	21	61
090308316	10	3/8"	23,5	21,3	68
090102316	15	1/2"	29	27	102
090304316	20	3/4"	35	33	164
090100316	25	1"	43	38	264
090114316	32	1" 1/4	52	45	413
090112316	40	1" 1/2	58	50	521
090200316	50	2"	71	58	808
090212316	65	2" 1/2	86,5	69,7	1183
090300316	80	3"	99,5	77,5	1380
090400316	100	4"	125	98,2	2714



91 Gomito FF con flangia

Wall plate elbow F/F
 Deckenwinkel mit Innengewinde
 Coude FF avec bride
 Codo placa

Materiale: AISI 316 / W. 1.4401
 Filettatura: ISO 7/1 (ex DIN 2999)
 Rating: 150 PSI – PN10

Codice	DN	DN inch	α gradi	L mm	A mm	B mm	C mm	D mm	Peso gr
091102045	15	1/2"	45°	22,8	28,5	55	27	25	146
091102090	15	1/2"	90°	27,7	28,5	55	27	25	162